



Weighing Systems

| | |
|---------------------------|-------------|
| Basics | B278 - B279 |
| Compact Series EziWeigh | B280 |
| Pro Series 5000 | B281 |
| Weighing CellsLoad bars | B282 |
| Accessories / Tag readers | B283 - B284 |
| Overview | B285 |

The world No. 1 in electronic scales for livestock farming

Compatible with the software from DSP-Agrosoft and Agrocom

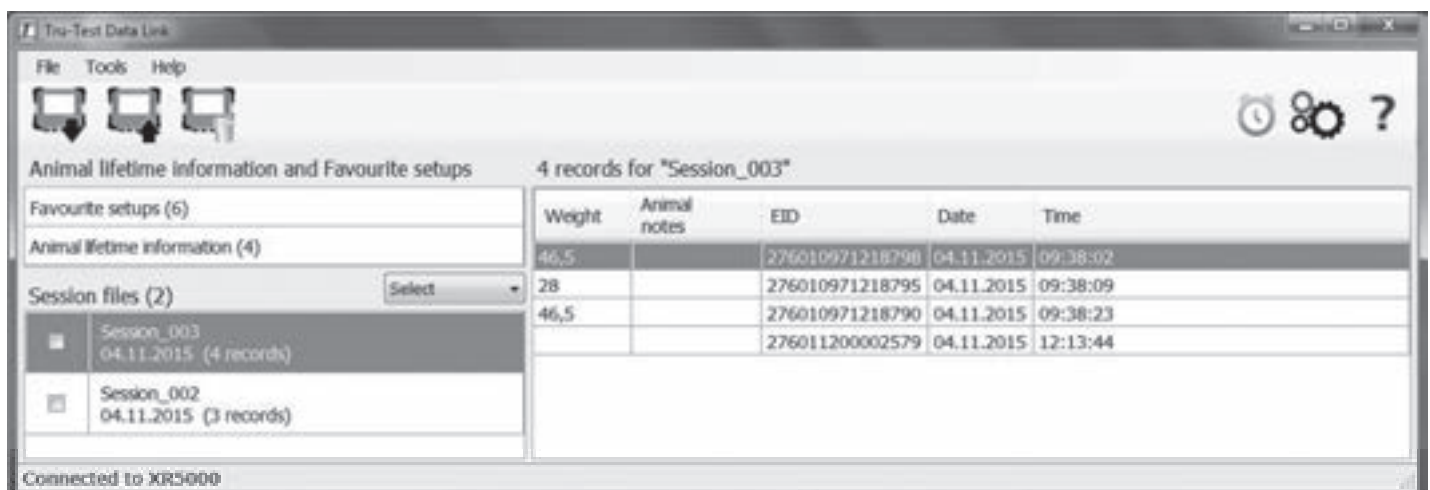


Is the system compatible with ear tag readers?

The indicator units of the 5000 series and the EziWeigh model 7i have an EID-interface for a linkage to electronic animal identification systems (electronic ear tags, implants, etc.) as per ISO 11784/11785 standards.

How do I get the data to a computer?

1. Data transmission by software



The indicator units of the 5000 series and the EziWeigh 7i and S3 model include a transfer software for downloading and/or uploading the stored data to or from a personal computer. The data files can be opened and processed with various spreadsheet programs. Additionally, you can create detailed reports directly on the indicators.



What does a weighing system consist of?

A system consists of an indicator and 2 load bars or 4 weighing feet. The load bars record the weight and can be mounted under platforms, crushes or other weighing containers. They are connected to the indicator with the help of cables. The value measured by the load cells is converted into a weight with the help of the indicator and is shown on the display. The indicator automatically adapts itself to all weighing elements.

Tru-Test weighing systems are non calibratable.

How does the weighing system get power?

The indicator can be powered either by a 12 V car/tractor battery, or by an appropriate mains adaptor. Alternatively, all models can be powered by a built-in rechargeable LiFePo battery.

Quick, easy weighing

The unique SUPERDAMP III software provides an accurate and stable weight in seconds, even with restless animals. For maximum accuracy the displayed, stable weight is continuously updated.

Tru-Test weighing systems are specialised in weighing livestock.

Easy operation

The keys of the scales are large, easy to read, logically arranged and are intuitively operable. The large LCD display is easy to read in all light conditions. Clear operating instructions complete the userfriendly package.

All Tru-Test products comply with the quality standards of ISO 9001 – the highest quality standard.

Simple installation

The scale can be installed and is ready for operation in a few minutes. You need a sturdy, level base (preferably a concrete slab). Depending on application, you then install a stable platform, a crush or other weighing container to the load bars or weighing feet.



2. Data transmission by data app

Free of charge Android / Apple App for all Tru-Test indicators with Bluetooth interface

Weighing: Fields of application

- Weighing of cattle in crushes or on platforms
- Weighing of pigs on platforms or in cages
- Weighing of calves on platforms or in cages
- Weighing of sheep and lambs in crates or drafters
- Weighing of horses on platforms
- Weighing of agricultural goods on platforms

Weighing - Why?

- Identification of ideal carcass weights
- Monitoring of weight gain information for successful fattening
- Identification of weight trends for improved feeding
- Collection of weights for breeding
- Collection of weights for proper dosing of veterinary drugs
- Collection of weights for monitoring the health status

All Tru-Test load bars meet the highest quality standards. They are specially designed for agricultural use and excel by offering accurate weighing and a long life. Tru-Test weighing systems are non-calibratable.

- The load cells are manufactured in computer-controlled production procedures using high-quality material
- The electronic parts of the load bars are fully sealed to allow operation under all weather conditions
- All load bars have a 150 % overload capacity to allow for violent movement of the animals
- Connector cables to meet the most severe demands
- High quality cable connectors protect the load bars from moisture, dirt and adverse weather conditions
- Robust coatings protect from moisture, animal soil and corrosion
- Extremely simple to install

Description

Type

Ref.

Weight

NEW



Indicator S3

400067

- Easy to use
- Fast and precise weighing thanks to SUPERDAMP III technology
- Easy to read display with LED backlight
- Durable case, 100 % water and dust proof, IP67
- Built-in rechargeable LiFePo battery for up to 15 hours continuous operation
- Bluetooth interface for connection to the "Data Link" app: Record weights live and synchronously in the app and save them with the appropriate animal number
- Configuration and settings are done via the App
- USB interface to connect to the personal computer, software included
- Including 5 V USB charging cable

Weighing Set EziWeigh 5i

400055

16 kg

Indicator including
load bars MP600
Weighing range up to 1500 kg



- Easy to use
- Fast and precise weighing thanks to SUPERDAMP III technology
- Fine mode for smaller weights (resolution 100 g)
- Auto zero function, ensuring any accumulated dirt is not weighed
- Large, easy to read display with LED backlight
- Durable, double wall case, 100 % water and dust proof, IP67
- Built-in rechargeable LiFePo battery for up to 15 hours continuous operation
- Including power adaptor 230 V to 5 V and 5 V USB charging cable



Indicator EziWeigh 7i Bluetooth

400047

2 kg



Same as EziWeigh 5i, but additionally:

- Data entry of animal code with up to 13 characters
- Compatible with readers with USB interface for electronic animal identification (serial cable available separately)
- USB interface to connect to the personal computer, software included
- Manual 3-way drafting function by weight
- Storage capability for 20 000 records in up to 100 files
- Fully automated weighing, including data storage
- Statistics function
- Bluetooth interface
- Weight gain calculator



| Type | Ref. | Weight | Description |
|------|------|--------|-------------|
|------|------|--------|-------------|

| | | | |
|-------------------------|---------------|------|--|
| Indicator ID5000 | 480022 | 4 kg | |
|-------------------------|---------------|------|--|

- 7" (17.8 cm) display, transfective technology for high visibility even under direct sunlight
- Robust, double wall case, 100 % water and dust proof, IP 67
- Accurate weight measurement within seconds, even with restless animals
- Alphanumeric data entry
- Stores individual animal data: 3 ear tags, weight and 3 additional parameters
- Storage capacity for up to 250 000 individual animal records in up to 250 files
- **5-way sorting function by weight, weight gain**
- Weight gain calculation
- Saves preferred settings
- Data transmission to personal computer via USB, to ear tag readers via Bluetooth or serial data cable (available separately)
- On site data transmission with Android/Apple data App or USB stick
- 2 USB interfaces
- Incl. carry case made of robust plastic, built-in LiFePro battery, mains adaptor, USB cable and USB stick with data transmission software




| | | | |
|-------------------------|---------------|------|--|
| Indicator XR5000 | 480023 | 4 kg | |
|-------------------------|---------------|------|--|

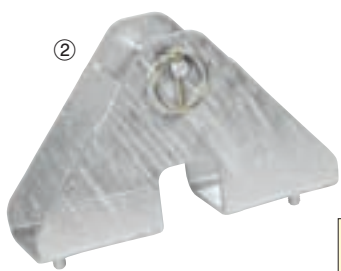
- 7" (17.8 cm) display, transfective technology for high visibility even under direct sunlight
- Robust, double wall case, 100 % water and dust proof, IP 67
- Accurate weight measurement within seconds, even with restless animals
- Alphanumeric data entry
- Stores individual animal data: **4** ear tags, weight and **100** additional parameters
- Storage capacity for up to **1 000 000** individual animal records in up to **1 000** files
- **10-way sorting function, even by several criteria at the same time**
- Weight gain calculation
- Saves preferred settings
- Data transmission to personal computer via USB, to ear tag readers via Bluetooth or serial data cable (available separately)
- On site data transmission with Android/Apple data App or USB stick
- 2 USB interfaces
- Incl. carry case made of robust plastic, built-in Li-Ion-rechargeable battery, mains adaptor, USB cable and USB stick with data transmission software



| Description | Type | Ref. | Weight |
|---|---|---|-------------------------------|
|  | <p>Load Bars MP600 1 set = 2 bars</p> <p>Load Bars MP800 1 set = 2 bars (not illustr.)</p> | <p>400600</p> <p>400800</p> | <p>13.9 kg</p> <p>16.5 kg</p> |
| <p>The MP600/MP800 type load bars are designed for a wide variety of applications. They can be used for mounting under platforms for all types of animals, or with sheep and pigs in crushes. The universal MP600/MP800 load bars have a weighing capacity of up to 1500/2000 kg. The length of the bars is 600/800 mm. The bars contain aluminium load cells - to improve the corrosion protection the steel container is galvanized.</p> | | | |
|  | <p>Load Bars HDST 1 set = 2 bars</p> | <p>400500</p> | <p>42 kg</p> |
| <p>The HDST load bars have been developed for general application under cattle crushes as well as for use underneath platforms and for mobile application under cattle crushes. The HD load bars are designed for high loads and high usage frequencies and have a weighing range of up to 5000 kg. The length of the bars is 1040 mm, the height 75 mm. The bars contain aluminium load cells, the steel housing is galvanised for better corrosion protection.</p> | | | |
|  | <p>Weighing Feet 1 set = 4 feet Compl. with junction box and 6 m connector cable</p> | <p>430004</p> | <p>3.9 kg</p> |
| <p>The weighing feet have been designed for general purpose weighing of animals and handle up to 3000 kg total weight. Weighing feet are especially suitable for weighing pigs and cattle when mounted under platforms up to 5 m x 5 m, and for weighing pigs and calves in crates. The weighing feet are completely enclosed in rubber, all metal parts are stainless steel. They will withstand exposure to the elements and are suitable for the harsh farm environment (IP68) and are thus especially suitable for extreme strains like in hog/pig barns. Dimensions: total height 94 mm, diameter 80 mm, bolt dia. 14 mm, thread length 45 mm</p> <p>The weighing feet are also suitable for all other weighing applications in the agricultural field.</p> | | | |
|  | <p>Aluminium Weighing Platform 223 For cattle L x w x h: 223 x 61 x 25 cm</p> | <p>410000</p> | <p>32 kg</p> |
| <ul style="list-style-type: none"> • Non-slip surface • Angled 20 cm high sides prevent animals slipping from the platform • For load bars MP600 |  Please order indicator and load bars separately! |  | |
|  | <p>A typical mobile weighing unit is made up of the following individual parts (indicator and load bars may be substituted for other models):</p> | | |
| <p>2x 310202 Panel-6 2.40 m</p> | | | |
| <p>2x 310108 Frame with Sliding Gate</p> | | | |
| <p>1x 410000 Aluminium Weighing Platform 223</p> | | | |
| <p>1x 400055 Weighing Set EziWeigh 5i (including load bars)</p> | | | |

| Type | Ref. | Weight | Description |
|---|--------|--------|---|
| ① Mechanical scale for sheep and calves incl. crane scale for max. 200 kg, for calves up to 3 months (see inner dimensions) l x w x h: 1.32 m x 0.50 m x 0.87 m (inner dimensions) | 430340 | 76 kg |  |

- ② **Conversion kit for mechanical scale** 430341 3 kg
for conversion to electronic weighing system
- Stable construction
 - For calves up to 3 month (see internal dimensions)
 - Large, easy-to-read display
 - Secure standing, even on straw bedding
 - Gates at front and exit, snaps in automatically when letting in
 - Long lifting handles for easy transport
 - Easily includable into the drive by means of welded tabs



! For the reconstruction to an electronic weighing system, the conversion kit as well as a load cell (Ref. 430005) and an indicator must be ordered.

| | | |
|---|--------|--------|
| Load Cell incl. connection cable max. load 250 kg M12 thread for fixing incl. eyebolts | 430005 | 0.5 kg |
|---|--------|--------|




Ideal for the reconstruction of mechanical scaling systems

| | | |
|--|--------|--------|
| Weighing Cage, small livestock Hot-dip galvanised, with wheels | 430311 | 133 kg |
|--|--------|--------|

- For calves, pigs and sheep
- For combination with load bars MP600
- Dimensions l x w x h:
150 x 50 x 110 cm (internal)
160 x 69 x 125 cm (external without wheels)
165 x 88 x 160 cm (external with wheels)



! Please order indicator and load bars separately!

| Description | Type | Ref. | Weight |
|---|--|---------------|--------|
|  | Weighing Cage, heavy livestock Painted, with 2-wing gate in front and back With 3-point linkage | 430330 | 403 kg |
| | Mounting Feet Adjustable, with mounting plates for load bars HD5T | 303009 | 10 kg |

- For cattle
- For a combination with Tru-Test scales, i.e., with all Tru-Test indicators and load bars HD5T
- Internal dimensions: length 2.45 m, width 0.82 m, height 1.70 m
- External dimensions: length 2.60 m (with gate open 3.00 m), width 1.25 m, height 1.90 m

! Please order indicator and load bars separately!

| | | | |
|--|--|---------------|--------|
|    | 1 Antenna XRP2 for Cattle l x w x h: 87 x 60 x 1.5 (4) cm | 400080 | 8.5 kg |
| | 2 Antenna XRP2 for Sheep l x w x h: 42 x 40 x 1.0 (3.5) cm | 400019 | 2.5 kg |
| | 3 Reader XRP2 With Bluetooth interface, IP 67, 12 V, with autotuning, suitable for use with antenna of the series XRP2, l x w x h: 20 x 22 x 7.4 cm | 400018 | 2.0 kg |

- For contactless read-out of electronic ear tags
- Conforms to ISO-standard 11784 and 11785, as well as meeting HDX and FDX transmission requirements
- XRP2: data transmission via Bluetooth to indicator S3, EziWeigh 7i and indicators of the series 5000
- Included in delivery: 12 V cable, serial connection cable, USB/serial adapter, configuration software

Choose an antenna and a reader

| | | | |
|--|---|---------------|--------|
|   | 8 Stick Reader XRS2 l = 65 cm | 400022 | 1.6 kg |
|--|---|---------------|--------|

- For touchless read-out of electronic ear tags
- Conforms to ISO-standard 11784 and 11785, as well as meeting HDX and FDX transmission requirements
- Supplied with stick reader XRS2: alphanumeric keypad, easy-to-read large display, up to 15 configurable data fields, configurable alarm messages, included in delivery: mains adaptor, rechargeable battery, USB cable, Bluetooth interface, USB memory stick with Data-Link Software, carrying bag



| Indicators | S3 | EziWeigh 5i | EziWeigh 7i | ID5000 | XR5000 |
|---|-------|-------------|-------------|---------|-----------|
| SUPERDAMP III software | • | • | • | • | • |
| Zero on switch-on: On/Off | • | • | • | • | • |
| Auto zero function: On/Off | • | • | • | • | • |
| Energy-saving function (auto switch-off after 15 min) | • | • | • | • | • |
| Tare weight function | | | | • | • |
| Statistical function | | | • | • | • |
| Ear tag number with weight recording | | | • | • | • |
| Number of memory slots | | | 20 000 | 250 000 | 1 000 000 |
| Number of files | | | 100 | 250 | 1 000 |
| Computer interface (serial/USB) | (-)/• | | (•)/• | (•)/2x• | (•)/2x• |
| Bluetooth interface | • | | • | • | • |
| Data transmission by data App (Android/Apple) | • | | •/• | •/• | • |
| Data transmission by Windows software (included) | • | | • | • | • |
| Data transmission by USB stick | | | | • | • |
| Interface for electronic animal identification EID (serial/Bluetooth) | | | •/• | (•)/• | (•)/• |
| Group weighing mode | | | | • | • |
| Adjustable weighing speed | | | | • | • |
| Alphanumeric data input | | | • | • | • |
| Weight gain | | | • | • | • |
| Sort on live weight | | | • | • | • |
| Sort on weight gain | | | | • | • |
| Sorting option by one selectable criteria | | | | | • |
| Sorting option by different criteria at the same time | | | | | • |
| Interface for automatic sorting | | | | • | • |
| Automatic weight storage | | | • | • | • |
| Animal information | | | •(4) | •(6) | •(104) |
| Built-in rechargeable battery | • | • | • | • | • |
| Display animal history | | | | • | • |
| Weight gain prediction | | | | | • |

| Load bars | | Weighing feet | MP-Serie (load bars) | | HDST |
|---|----|---------------|----------------------|-------|-------|
| | | | MP600 | MP800 | |
| weighing range | kg | 3000 | 2000 | 3000 | 5000 |
| Length | mm | 80 | 600 | 800 | 1040 |
| Width | mm | 80 | 75 | 75 | 75 |
| Total height | mm | 94 | 100 | 100 | 108 |
| Standard resolution | g | 500 | 500 | 500 | 500 |
| Fine weighing (resolution 100 g) | | • | • | • | |
| Accuracy | | ± 1 % | ± 1 % | ± 1 % | ± 1 % |
| Shock-absorbing rubber feet | | • | • | • | |
| Feet elements with side stabilizers | | | | | • |
| Portable | | • | • | • | |
| Built-in | | | | | • |
| Application recommendations: platforms and crushes for pigs and sheep | | • | • | | |
| Application recommendations: platforms for cattle | | • | • | • | |
| Application recommendations: crushes for cattle | | | | | • |

